

## A child is lying on their stomach, drawing on a large sheet of paper. The drawing features a large school building with a clock tower, a sun, and various school supplies like a calculator, a ruler, a compass, and a glue bottle. The child is wearing a grey shirt and is focused on their work.

# 2023-2024 Concurrent Placement

Pang Tsz Nga, Jake  
September 2023  
wptn@hku.hk

# Welcome on board

---

What are curious about YOUTH?

- 1.
- 2.
- 3.



# 5 SECOND SELF-INTRODUCTION TO CHILDREN & YOUTH

- Concise
- Impressive
- Attractive
- Resourceful
- Fit their needs

**Beware of your Image**

**Non-threatening**



# Read before placement

---

<https://placement.socialwork.hku.hk/placement.html>

- Types of placement/ Services for Children & Youth (CYS)
- Placement form/A-09 Agency Feedback Form
- A-10a/ ASSESSMENT OF PERFORMANCE



HKU  
SWSA

Department of Social Work and Social Administration  
The University of Hong Kong  
香港大學社會工作及社會行政學系

# AI generated language models

---

As per the 2023 – 24 course outlines of SOWK4006, 4007, 6225 & 6231

‘In order to maintain clients’ confidential data and in line with the ethical practice of the profession and the requirements of the personal data (Privacy) Ordinance, 1995, which are reiterated in the social work fieldwork placement handbook (pp.16), it is **prohibited to use the AI generated language models for fieldwork courses.**’





# ICYSC

- Centre based services (some have OR or/and School ss)
- 6-24 children and youth and their parents/families.
- SEN, new arrival, emotional/behavioral/social skills/mental health issues, etc.
- Drop-in service, interest Classes, special projects
- Work with schools, e.g. 「小學全方位輔導服務」、「成長的天空」(UAP)、「共創成長路」(PATH)、「區本及校本課後支援計劃」

# Things to Note

---

- Try to know about /experience other teams' work;
- Casework may not be allowed.
  - Try your best to negotiate with the in-charge & your supervisor;
  - Brief case? Informal case?
- Don't expect very problematic cases. Pay attention to their needs and potential risks/difficulties such as being neglected by the parents, being bullied by peers, school adjustment issues. Early intervention helps them a lot;
- Big challenge of engagement and recruitment. You have to identify potential cases/group clients by yourself

A close-up photograph of various colorful wooden letters and numbers scattered on a blue surface. The letters and numbers are in shades of red, yellow, and green. Some are in the foreground, while others are blurred in the background.

# RS

- Target: Age below 18 (some of them are below 21)

## Institutional Residential Service

- Children and adolescents who have emotional disturbances or behavioral problems
- Children and adolescents who are under Child and Protection Order (C&P order) or Probation Order (PO)

## Small Group home

- Those families cannot function well to take care of their children e.g. broken/difficult families, abuse, violence, parents as drug addicts...
- Ward children
- No serious behavioral/emotional problems



# Things to Note

---

- Your work have to match the schedule of home;
  - Night duties and holiday duties could be possible
- Many social workers are involved to follow one case such as SWD IFSC worker, Probation Officer (if any) ,School Social Worker and the workers in the hostel;
- Pay attention to SEN & mental health issues;
- Check if the residents will take home-leave during summer/ prolonged holiday. If so, you need to finish the assigned tasks as early as possible



# Outreaching Social work

---

- YOTs (day & night time) & YNDs (10pm-6am)
- Target: 6-24 youth-at-risk
- Common issues: drug abuse, triad society, truancy, sex- related issues, crime, emotional disturbances, family issues
- Testing behaviors, aggressive and undesirable behaviors
- Field observation, “Spot” work & referral work
- Working in unstructured setting e.g. street, park, fast-food shop, etc.
- Irregular working hours and outdoor work
- Casework-based, group work, program work & inter- disciplinary cooperation

# Things to Note

---

- Icebreaking & engagement skills are crucial;
- Continuous rapport building;
- Thick understanding on individuals and families;
- Client-centered values and skills;
- Understanding natural group and gang dynamics;
- Tailor-made activities;
- Independent, mature, open-minded, quick responding, creative, positive, empathetic;
- Value shock, non-judgmental principle;
- Willing to connect with & understand clients;
- Very challenging and with frequent frustration;
- ***Fight with & fight for the clients, not fight against the clients!***

# Contemporary approaches to work with young people

Use of Art

Positive Psychology

Narrative Therapy

Mindfulness

Career guidance

Use of Play

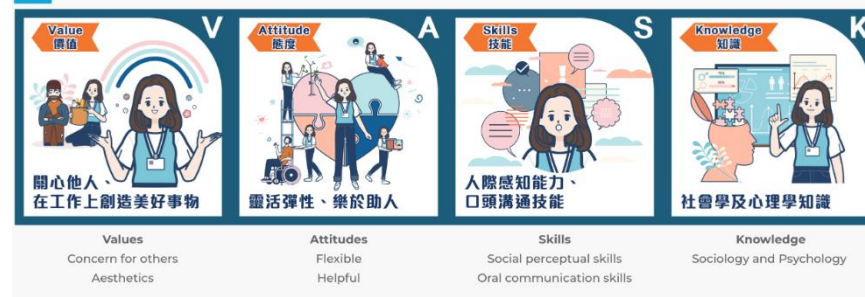
Newly emerged sports



壓花字母燈 25/5 (DSE 限定)



## Social Worker

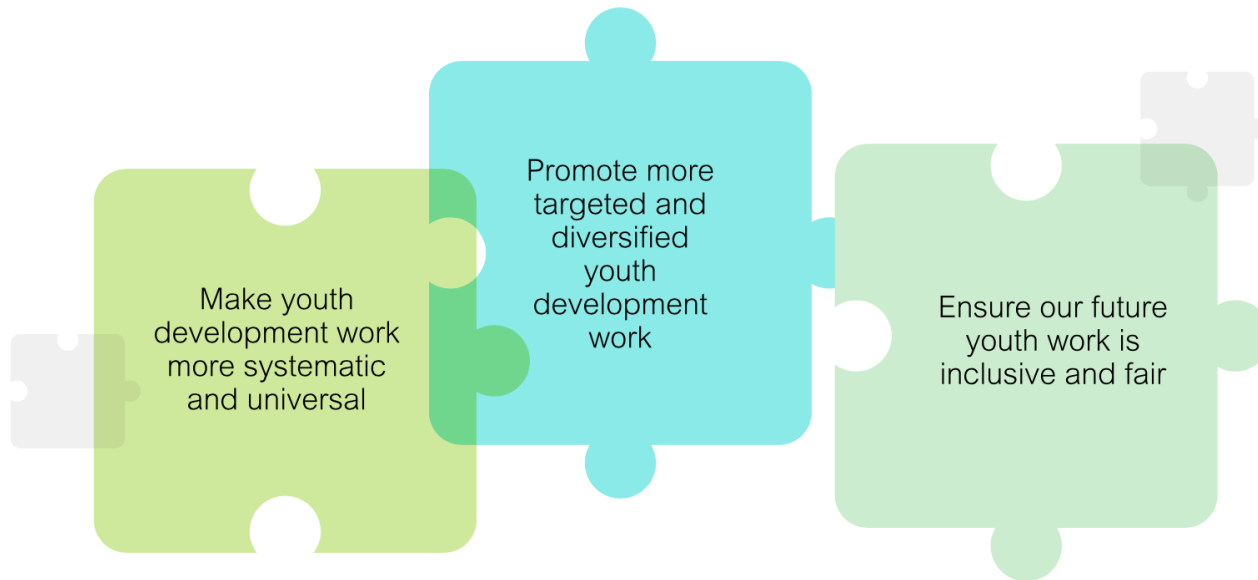


# Youth Development Blueprint

---

You may need to check it out before your placement

## Overall Strategies





# Reminders

---



- Pay attention to the characteristics of your target group
- Understand their needs & problems & challenges
- Client's culture and context:
  - e.g. the impact of the social media, social issue
- Dress code – your image
- Boundary

# Please Mark the Dates

---

## **Agency Visit 1**



- Date : 7 July 2023
- Time : 10:00 a.m. to 12:00p.m.
- Venue : AKA Jockey Club Integrated Service Centre
- No. 1, Podium Floor, Pik Ngan House, Shek Pai Wan Estate, Aberdeen, Hong Kong

## **Agency Visit 2: Mother's Choice (T.B.C.)**

## **Mid-Placement Sharing**

- Date : 13 December 2023
- Time : 7:00 p.m. – 21:00 p.m.
- Venue : CJT 533